

TACOMA EYE NEWSLETTER

6004 N Westgate Blvd- Suite 180 Tacoma, WA 98406



\$50 off all Marie Claire and Ernest Hemingway eyeglass frames!

Beginning February 1, 2020 until May 1st (*while supplies last*), we'll take \$50.00 off all **Marie Claire, Ernest Hemingway and Coach** frames when you purchase a complete eyeglass package: (Frames & lenses). There are three simple ways to make an appointment.

1

CALL

253-220-2563 during
business hours

2

AFTER HOURS

Call 253-220-2563
select option "2" and
speak to our 24hr
answering service

3

ONLINE

www.Tacoma-eye.com

24H 7 days a week



Dr. Meers

Has two decades
experience as an
optometrist and is a
Tacoma resident.



All ages are welcome

We provide care to
people from age 5
to 105

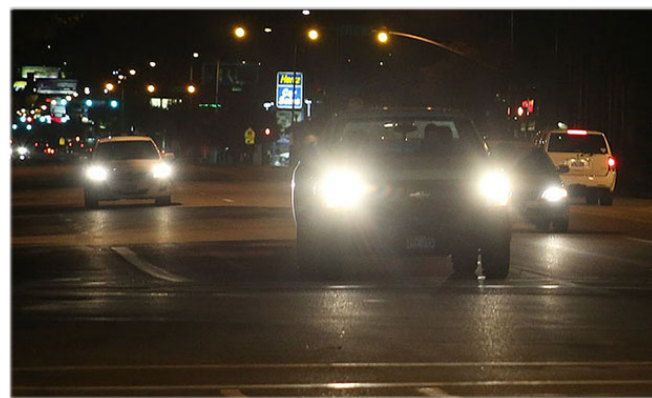


Sunglasses

We have a wide
selection of
sunglasses
including Ray Ban,
Coach & Oakley

In winter, when the days are shorter, we tend to end up driving more at night.

For those of us without perfect eyesight, this can be an increasingly stressful adjustment to make every year, and we should all take the dangers of night driving into careful consideration. It won't just make a difference to our own lives, but to the lives of those we encounter on the road.



The Common Struggles of Night Driving

A road at night can look very different from the same road in broad daylight. Between the glare of oncoming headlights and the deep shadows, **upcoming curves and obstacles are harder to notice**. While some people might be confident in their ability to adjust to night driving conditions, not everyone they share the road with is, and that requires everyone to be more careful in order to minimize the risk of accidents.

TACOMA EYE CAN HELP:

If night driving has become more of a problem lately, come see us! We can help determine the cause and if it's something that can be addressed with a different glasses prescription or other aid. Bring any questions or concerns you have with you, and we look forward to seeing you! Call 253-220-2563.

